

BLUE  SQUIRREL

WebSeeker



Version 6.0

User's Guide

for

WINDOWS 95/98/NT/Me/2000/XP

Blue Squirrel • www.bluesquirrel.com • © 1995-2006 • 686 E. 8400 South, Sandy Utah 84070

COPYRIGHT

© 2006 Blue Squirrel

All rights reserved. No parts of this work may be reproduced in any form or by any means - graphic, electronic, or mechanical, including photocopying, recording, taping, or information storage and retrieval systems - without the written permission of the publisher.

The Blue Squirrel stylized logo, and the WebSeeker stylized logo are trademarks of Blue Squirrel Software. Products that are referred to in this document may be either trademarks and/or registered trademarks of the respective owners. The publisher and the author make no claim to these trademarks.

While every precaution has been taken in the preparation of this document, the publisher and the author assume no responsibility for errors or omissions, or for damages resulting from the use of information contained in this document or from the use of programs and source code that may accompany it. In no event shall the publisher and the author be liable for any loss of profit or any other commercial damage caused or alleged to have been caused directly or indirectly by this document.

Printed: April 2006

Information in this document is subject to change without notice and does not represent a commitment on the part of Blue Squirrel. The software described herein, including all associated documentation and data, is the exclusive property of Blue Squirrel or its suppliers and is furnished only under a license agreement defining the terms and conditions governing its use by licensee. It is against the law to copy the software except as specifically allowed in the license agreement. No part of this document may be reproduced or transmitted in any form or by any means, including without limitation graphic, electronic, photocopy, facsimile, taping or mechanical reproduction of any kind without the prior written approval of Blue Squirrel.

Use of this product is subject to the terms of the accompanying License Agreement as stated in the back of this book.

U.S. Government Restricted Rights Legend

The Software and documentation are provided with RESTRICTED RIGHTS. Use, duplication, or disclosure by the Government is subject to restrictions as set forth in subparagraph (c) (1) of the Rights in Technical Data and Computer Software clause at DFARS 52.277-7013 or in subparagraph (c) (1) (ii) and (20) of Commercial Computer Software-Restricted Rights at 48 CFR 52.227-19, as applicable. Contractor/manufacturer is Blue Squirrel Software, 686 E. 8400 South, Sandy, UT 84070.

Special thanks to:

Blue Squirrel Software would like to acknowledge all of the Blue Squirrel staff (Web and Product Development, Sales, Customer Service, Technical Support, and Marketing) that made this program possible.

Blue Squirrel
686 E. 8400 South
Sandy, UT 84070
801-352-1551
www.bluesquirrel.com

Table of Contents

Part I Getting Started	2
Part II What's New	2
Part III Using WebSeeker	2
Part IV Tutorial	3
1 Chapter One: Searching the Internet	3
Lesson 1: Creating a New Search	3
Lesson 2: Opening an Existing Search	5
Lesson 3: Expanding a Search	5
Lesson 4: Renewing a Search	6
Lesson 5: Customizing a Search (Internet Tab)	7
Lesson 6: Stopping a Search	7
Lesson 7: Boolean and Other Search Operators	7
2 Chapter Two: Managing Search Results	7
Lesson 8: Standard Refining	7
Lesson 9: Advanced Refining	8
Lesson 10: Constructing Valid Search Expressions	9
Lesson 11: Add Result(s) URL	11
Lesson 12: Changing Results Settings	11
Part V Menu Commands	12
Part VI Advanced Features	14
1 Advanced Searching	14
2 Time Out Settings	15
3 Setting Options	15
4 Perform an Unattended Search	16
5 Create Search Engine Categories	17
6 Add New Search Engines	18
7 Search Engine Properties	20
Part VII Customer Support	20
Part VIII Upgrading	21
Part IX Uninstalling	21
Index	0

1 Getting Started

WebSeeker is a meta-searcher. It resides above search engines, such as Google, Ask, Yahoo, Lycos, Webcrawler, etc. WebSeeker performs a comprehensive search of numerous different search engines by creating individual keyword searches for each engine. WebSeeker then brings back the results, sorts them, removes duplicates, collates them, and presents the results to the user. The user can then view the results in list form, or as an HTML Web page.

In WebSeeker, you can create a WebSeeker file (.WSK file) containing your search, and the results for the search. A .WSK file can be named after a user, a broad subject, or anything that the user chooses. Each .WSK file contains a keyword search for each search engine loaded in WebSeeker. Each search returns results. All of the results are listed together in the display window.

2 What's New

Version 6.0 includes:

- Updated Search Engines
- Drag-and-Drop indexing of any link
- Improved e-mailing
- Improved help system

3 Using WebSeeker

WebSeeker can be used many ways (much like a web browser), but WebSeeker is particularly good at monitoring a topic. You can set up WebSeeker to keep up-to-date on a set of keywords.

Monitoring a Topic

- Start with a new search (File->New)
- Using the search wizard, enter the keywords that you would like to search for.
- If you want the search to include more information, hit the "Expand Search" button and add more keywords.
- If you want to download and keep all the pages and be able to narrow the search, use the "Filter Find" setting when creating your search.
- If you want to automatically search every day, schedule the search (Search->Schedule).
- If you want the results e-mailed to you, go to Tools->Options and choose the "EMail" tab and set your e-mail server, and then the "Writing" tab and set the e-mail address.
- If you view click on the pages to view them, the yellow "New" status will disappear so you know you've seen that page.
- If you believe a page is interesting and is likely to change and have new information, then right-click and set to "Monitored" so that that page will get downloaded during future searches.

WebSeeker is very good at storing results for you. Web pages will change. News stories come and go. Many news organizations are putting their old stories in an archive where you have to pay to access them. If you use WebSeeker capture the news stories, you'll have your own stored record which is completely searchable.



Storing Pages

- Start with a new search (File->New)
- Drag pages to WebSeeker. If WebSeeker is hidden, drag the link or icon to WebSeeker on the

open window bar and hold. WebSeeker will pop open and you can drop the link or icon onto WebSeeker to save the page.

- Save the .WSK file to a location to keep the archive. You will have a .WSK file and a folder with the same name. The pages are stored in a way that you can access them with WebSeeker or by a regular web browser.

WebSeeker is a very "smart" program and knows what you've looked at, and what it has seen already. It knows about duplicates and will combine duplicates so that you are not reading the same page from two or more different search engines. The "New" icons will appear on content that is new so you don't need to spend your time re-reading pages that you've already seen. If you reject a result, it is hidden and WebSeeker will keep it hidden even when the same page is seen again by another search engine.

The new WebSeeker 6.0 also lets you add your own results by dragging links or the icon next to the URL in the browser  (in IE), or  (in Firefox), to WebSeeker. The text on these pages get indexed and can be searched using the Refine tools in WebSeeker.



4 Tutorial

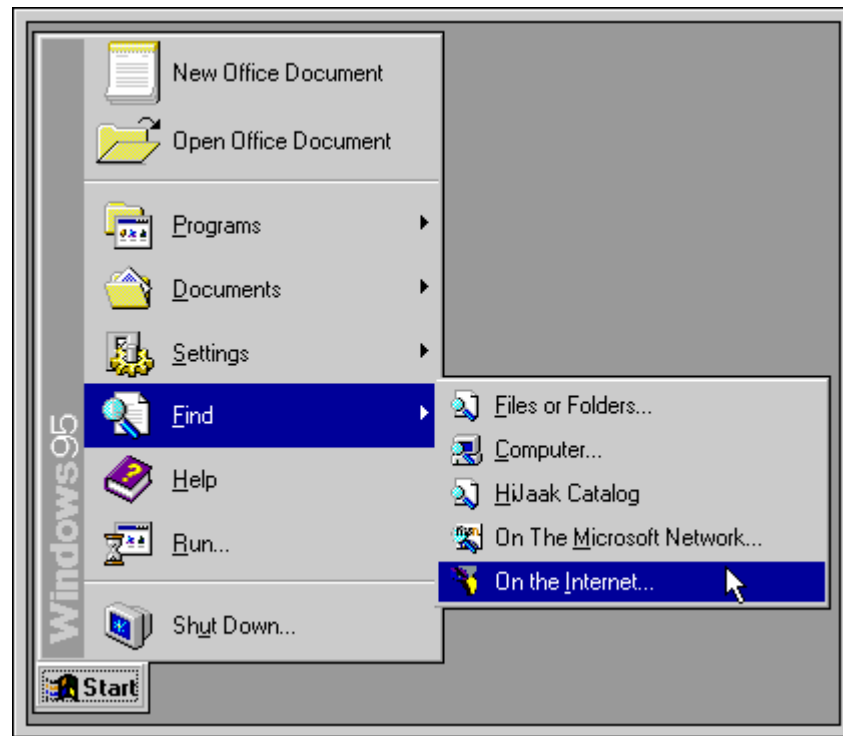
4.1 Chapter One: Searching the Internet

4.1.1 Lesson 1: Creating a New Search

Use the Start New Search dialog box to create a new search.

1. Start WebSeeker

- ◆ Click the Windows Start button ™ to display the Start Menu.
- ◆ On the Start Menu, go to Find, On the Internet.
- ◆ ..
- ◆ OR
- ◆ ..
- ◆ Click the Windows Start button ™ to display the Start Menu.
- ◆ On the Start Menu, go to Programs, Blue Squirrel [WebSeeker](#), [WebSeeker](#).
- ◆ NOTE: If you own a previous version of [WebSeeker](#), it may be listed as ForeFront [WebSeeker](#).
- ◆ ..
- ◆ OR
- ◆ ..
- ◆ Double click on a .WSK file from Program Manager or Windows Explorer.
- ◆ ..



..
..

The **WebSeeker** Start New Search box appears.

2. Configure the search

- ◆ On the Keywords tab, you can enter the keywords for your new search.
- ◆ Choose the AND or OR Boolean Operators, search multiple keywords AS A PHRASE, or search for a SUBSTRING.
- ◆ Select the type of search desired:

InstantFind - is the fastest type of search. It removes any duplicate URLs or duplicate Titles (as defined in Preferences) from the search results.

CleanFind - is the next fastest type of search. It removes duplicates and any URLs that are unavailable.

FilterFind - is the most robust search. FilterFind is not quite as fast as InstantFind or CleanFind. It removes duplicates, unavailable sites, and downloads search results to your hard drive for Refining.

3. Select Search Engines

- ◆ When you have finished entering your keyword information, you can select the **Search Engines** tab to select specific Search Engines. If no changes are made on the **Search Engines** tab, it defaults to **Select All Engines** that support the specified search type.

4. Launch the search


- ◆ Choose to have **WebSeeker** perform the search immediately.
- ◆ Choose to postpone the search until a later time.

Now that you have created a search, you may want to return to that search at another time. [See lesson 2](#) to learn how to open an existing search.

4.1.2 Lesson 2: Opening an Existing Search

You may want to return to a previously saved search to browse the results, or to update the search. You can open an existing .WSK file several ways.

1. Open a file from within WebSeeker

- ◆ Select Open from the File menu or press the Open  button on the toolbar. Select the .WSK file you wish to open.
- ◆ Recently used .WSK files are listed at the bottom of the File menu. Select a file to open it.

2. Open a file from Windows Explorer, or Program Manager

- ◆ Start Windows Explorer, or Program Manager.
- ◆ Locate the .WSK file you wish to open.
- ◆ Double click the .WSK file. **WebSeeker** launches, and opens to the selected file.

Now that you are comfortable working with existing files, [go to lesson 3](#) to learn how to expand a search to increase search results.

4.1.3 Lesson 3: Expanding a Search

Once a search is complete, you may find that different keywords might improve it, or maybe you want to add more search engines. Using the Expand Search function, you can easily add keywords and search engines to receive different results. You can expand your search by adding one or more Search Engines, or by adding keywords to the search. You can add more Search Engines to a new search before it has been run, or add more keywords, and more search engines to a completed search. Both of these functions can be accessed by selecting Expand Search from the Search menu.

To expand a search:

1. Perform a Search

- ◆ First you must perform a regular **WebSeeker** search.
- ◆ Or, open an existing search.

2. Expand the Search

- ◆ From the Results window, select **S**earch, **E**xpand Search. The **Start New Search** dialog box appears.

3. Add Keywords

- ◆ Enter the keywords you would like to add to the current search.
- ◆ Choose the AND or OR [Boolean Operators](#), search multiple keywords AS A PHRASE, or search for a SUBSTRING.

4. Add or delete search engines.

- ◆ Select the Search Engines tab.
- ◆ Select/deselect the search engines you want to use.
- ◆ Select Find Now, or Find Later.

If **Find Now** is selected, **WebSeeker** performs the search with the expanded keyword list, and the original keywords separately. For example, if you had previously searched for "alligators" and then expanded the search to include "crocodiles," **WebSeeker** runs one search for "alligators," and a separate search for "crocodiles." If you wanted search results to include both "alligators" and "crocodiles," you would have to enter both keywords "alligators crocodiles" and use the **AND** Boolean operator.

Note: To decrease results by adding keywords see [Lesson 8: Standard Refining](#)

By default, **WebSeeker** also searches all of the search engines from the original search, and from the expanded search engines.

To execute only the expanded keywords (from step 3):

Select **Find Later**.

- ◆ If the search engines pane is not visible, select **View, Search Engines**. The Search Engines pane appears, listing each search engine with the keywords it searches. For example:
 - ..
 - .. If a search engine is used in the original keyword search, but not in the expanded search, it is listed once with the original keywords only.
 - ..
 - .. If a search engine is selected for the expanded search, but was not used in the original search, it is listed once with the expanded keywords only.
 - ..
 - .. If the same search engine is used in the original keyword search, and with the expanded search, the engine is listed twice; once with the original keywords, and again with the expanded keywords.
 - ..
- ◆ Select **Search, Renew Selected Engines**.

WebSeeker runs a search with the selected engines and expanded keywords.

[In lesson 4](#), you will learn different ways to renew a search.

4.1.4 Lesson 4: Renewing a Search

You can use **WebSeeker's** Renew function to launch a previously completed search again, with the same configuration and keywords to keep track of any changes made to resulting sites. Or, you can renew an expanded search to reduce or expand your search results.

To renew a previously completed search with the current configuration:

1. Open or run desired search.

- ◆ Run a **WebSeeker** search.
- ◆ Or, open an existing, saved search.

2. Renew the search.

- ◆ From the Results window, select **Search, Start/Renew**.

WebSeeker renews the search.

To renew the search on expanded keywords and specific search engines only:

1. Expand the search by following steps 1-3 in [Lesson 3, Expanding a Search](#), and select **Find Later**.

2. Select desired search engines.

- ◆ If the search engines pane is not visible, select **View, Search Engines**. The Search Engines pane appears, listing each search engine with the keywords it searches. For example:
 - ..
 - .. If a search engine is used in the original keyword search, but not in the expanded search, it is listed once with the original keywords only.
 - ..
 - .. If a search engine is selected for the expanded search, but was not used in the original search, it is listed once with the expanded keywords only.
 - ..
 - .. If the same search engine is used in the original keyword search, and with the expanded search, the engine is listed twice; once with the original keywords, and again with the expanded keywords.
 - ..
- ◆ Select desired search engines. Make sure that any selected engines are listed with the expanded keywords rather than the original keywords.

3. Renew the search.

- ◆ From the **S**earch menu, select **R**enew **S**electe**D** **E**ngines.
- ◆ **W**eb**S**ee**k**er renews the search with only the selected search engines and keywords.

[In lesson 5](#), you will learn to configure personal preferences to customize your search.


4.1.5 Lesson 5: Customizing a Search (Internet Tab)

You can further customize your searches by using the Preferences dialog box, accessed from the Tools menu. Separate tabbed dialog pages allow you to configure the following aspects of your searches.

Use the Internet tab to tell WebSeeker which browser you want it to use, and to enter proxy server and port information (if applicable).

4.1.6 Lesson 6: Stopping a Search

Sometimes you may want to stop a search because you realize that you input the wrong search parameters or simply because the search parameters were so wide that the search will take a very long time.

- ◆ To stop a search before it has been launched, press the **C**ancel button.
- ◆ To stop a search that is already in progress, you can press the **S**top button , or select **S**top **S**earch, from the **S**earch menu, at any time. **W**eb**S**ee**k**er reports any results that were found before the search was aborted.
- ◆ Tip: If stop isn't responding, click on the Stop button and hold down.

To learn about Boolean Operators, [go to lesson 7](#).

4.1.7 Lesson 7: Boolean and Other Search Operators

When adding Searches, you have the option to choose a [Boolean Operator](#), or other search operator. The **W**eb**S**ee**k**er Start New Search dialog allows you to select the AND operator, **O**R, **P**HRA**S**E, or **S**UB**S**TR**I**NG by selecting the appropriate button. If no search operator is selected, **W**eb**S**ee**k**er uses the OR operator by default.

4.2 Chapter Two: Managing Search Results

4.2.1 Lesson 8: Standard Refining

After a **F**ilter**F**ind search has been performed, you can use the refine filter to search the current, downloaded results for more detailed information. With the **W**eb**S**ee**k**er Refine filter, you can easily search the resulting documents for **any** words or phrases in those documents. The **W**eb**S**ee**k**er Refine filter utilizes a left to right precedent. Basically, a left-to-right precedent is what most Western languages use when they write sentences from left to right; i.e., items written further left (in a sentence or a search list) are processed before items written further to the right and are, therefore, given precedence over any following items.

If you need to adjust the precedent beyond this level of left-to-right sorting, you may add parentheses to group specific keywords and operators together.

NOTE: **Refine** is only enabled when a **FilterFind** search has been performed.

1. **First have WebSeeker perform a FilterFind search.**

- ◆ All available results are downloaded to your hard drive for refining.

2. **Refine**

- ◆ From the Results menu, select Refine.
- ◆ The Refine dialog box appears.

Click on the dialog box below to learn more about each option.

3. **Review your current query. Each line of the dialog box includes a drop-down box containing the available logical operators and a text box for your search term or terms. The logical operator you choose in each line applies only to the terms in the adjacent text box.**

- ◆ AND adds the adjacent terms to the list of terms which must be found in every search result document. A document must include all of the query's AND terms to be included in the search results.
- ◆ OR adds the adjacent terms to the list of terms which may be found in any of the search result documents. A document need include only one of the query's OR terms to be included in the search results.
- ◆ BUT NOT adds the adjacent terms to the list of terms which must not be found in any of the search result document. A document may not include any of the query's BUT NOT terms if it is to be included in the search results.
- ◆ FOLLOWED BY specifies that the adjacent terms must be found in every search result document immediately after the keywords in the text box immediately above.
- ◆ NEAR specifies that the terms in the adjacent text box must be found in every search result document within 20 words of one another. (You can override the 20-word default; see Proximity Searches for details).

4. **Add words and options.**

- ◆ Enter any additional keywords desired, and select desired option for each word.

5. **Apply Refine configuration**

- ◆ When you have finished making desired changes in the Refine dialog, click the OK button to apply current configuration and close the refine dialog box.

WebSeeker automatically reduces current results to represent **Refine** configuration.

NOTE: **Refine** returns to its most recently used mode. If you press the **OK** or **Cancel** button from the **Standard Refine** dialog box, the **Standard Refine** dialog box appears the next time Refine is used. If you press **OK** or **Cancel** from the **Advanced** refine dialog box, the **Advanced Refine** dialog box appears the next time Refine is used.

To learn about the Advanced features of the Refine Filter, [go to lesson 9](#), Advanced Refining.

4.2.2 Lesson 9: Advanced Refining

Power users familiar with the syntax of Boolean logic can use the Refine command's Advanced mode to enter their filtering queries directly. The text box of this mode presents a "command-line" style of working.

NOTE: The Refine command works only on **FilterFind** searches. A **FilterFind** search is basically the same as a CleanFind search, but it takes a moment longer to index the full text of the search results, making it possible for you to search the full text of found Web pages.

The Refine command accesses both the Standard and Advanced Refine dialog boxes, returning you to the most recently used mode. If you find yourself in the wrong dialog box, simply click Standard or Advanced to switch to the desired setup.

WebSeeker's Refine command uses a left-to-right precedent . Basically, a left-to-right precedent is what most Western

languages use when they write sentences from left to right; i.e., items written further left (in a sentence or a search list) are processed before items written further to the right and are, therefore, given precedence over any following items. If you need to adjust the precedent beyond this level of left-to-right sorting, you may add parentheses to group specific keywords and operators together.

1. You must begin with a FilterFind search

- ◆ Perform a new **FilterFind** search or open the results of an existing, saved **FilterFind** search.

2. Open the Refine dialog box

- ◆ From the **Results** menu, select **Refine**. The **Refine** dialog box appears.
- ◆ Click the **Refine** button on the Toolbar.

The **Refine** dialog box appears, open to the most recently used mode.

3. Go to Advanced mode

- ◆ From the **Refine** dialog box, press the **Advanced** button, if necessary. The **Advanced** dialog box appears.

WebSeeker displays your current query in the syntax of Boolean logic. Edit the expression to meet your new criteria.

4. Enter refine expression

- ◆ Enter the desired refine expression and press **OK** to apply changes and close the dialog box
- ◆ or press **Apply** to change the current refine configuration and keep the dialog box open to make additional changes.

5 When you have finished making changes in the Refine dialog, you can:

- ◆ Click **OK** to close the Refine dialog box and apply the current configuration to your search results.
- ◆ Click **Apply** to apply the current configuration to your search results while keeping the Refine dialog open for further editing.

WebSeeker runs through your search results to determine which conform to your new search query and displays the reduced set of results in the main **WebSeeker** window.

You can use the Refine On/Off button on the Toolbar to toggle your display between the complete search results and the refined search results.

For examples of valid search expressions, [see lesson 10](#), Constructing Valid Search Expressions.

4.2.3 Lesson 10: Constructing Valid Search Expressions

Boolean and other search logic are rich and complex topics which often take up a full semester of a college-level course. Obviously, a full explanation is beyond the scope of this tutorial. However, most Web searches do not require a full range of Boolean expressions but rely on a limited subset of the possible queries.

In this section, we present some examples of valid expressions in both standard English and their search syntax counterparts. The syntax examples given here could be all or part of an expression entered in the Query text box of **WebSeeker's** Advanced Refine dialog.

Individual Word Searches

To search for the word "shark," simply enter it as is:

shark

Phrase Searches

To search for the phrase "great white shark," use parenthesis and quotes:

("great white shark")

That last search looks for all three words in the order shown with no intervening words. Sometimes you would like to maintain the specified ordering but are willing to accept intervening words. To find "men are attacked by the great white shark," you could type the following which allows 3 words between each pair of words:

```
("men attacked shark :3")
```

Of course, the above phrase would also find something like "men are attacking and killing sharks."

Sometimes, because you're unsure of all of the words in a phrase, you may wish to specify that one or more of the words in the phrase are "expendable." For example, the following example specifies that any two of the words specified may be missing and still cause a match:

```
("men and women are attacked and killed by sharks :3:2")
```

If the default span of zero is desired, the previous expression could be entered as:

```
("men and women are attacked and killed by sharks ::2")
```

Proximity Searches

To find two or more words "near" each other but in any order, use a proximity search. For example enter:

```
[taxes deductions]
```

This finds ".taxes after all the deductions.." as well as ".deductions figured from state taxes..."

The brackets indicate that you want to find the words within a certain span or range. The default width of the span is 20 words. You may override the default: For example, here we make the span 10:

```
[federal deductions taxes :10]
```

You may also specify an expendable count. In the following example, we allow two words to be missing from those specified:

```
[federal and state deductions taxes :10:2]
```

Boolean Searches

To find all documents containing "shark," "whale" or "dolphin" (or any combination thereof), use the vertical bar character:

```
shark | whale | dolphin
```

To find all documents containing both "sea" and "ocean," use the ampersand character:

```
sea & ocean
```

Nested Expressions

Any place that you can use a single word in an expression, you may also use a phrase, proximity, or OR ("|") sub-expression. Here are some examples:

```
failed | "gave up"  
("deep sea diving | scuba") or equivalently ("deep sea (diving | scuba)")  
["cookies and cream" sweets]  
("Mother Theresa") ("India") :20"
```

Notice that phrases within phrases require parentheses.

Parentheses

Parentheses may be used to specify the order in which you want the expression to be evaluated. In the following example, we want the AND (&) to be evaluated before the OR (|):

```
(fast & cars) | racing
```

In the next example, we want the OR (|) to be evaluated before the AND (&):

```
Indy 500 & (fast | cars)
```

NOTE: **Refine** returns to it's most recently used mode. If you press the **OK** or **Cancel** button from the **Standard Refine** dialog box, the

Standard dialog box appears the next time Refine is used. If you press **OK** or **Cancel** from the **Advanced Refine** dialog box, the **Advanced** dialog box appears the next time Refine is used.

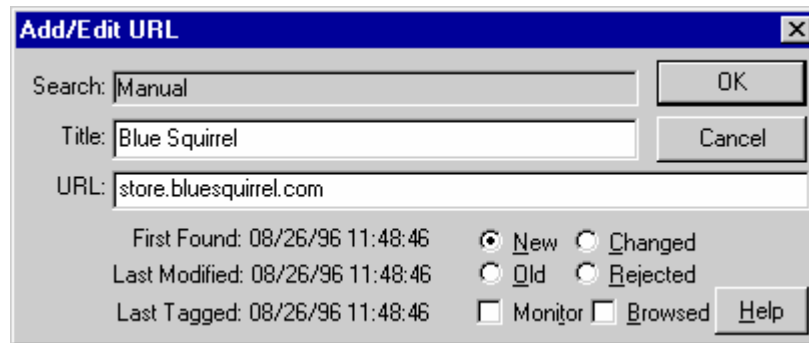
To learn how to add results (URLs), [go to lesson 11](#).

4.2.4 Lesson 11: Add Result(s) URL

If you come across an interesting URL on your own, you can add it to your results list, where it can be monitored, browsed, etc.

To manually add a result:

- ◆ Select **Add Result** from the **Results** menu.
- ◆ The **Add/Edit URL** dialog box appears.



- ◆ Enter the **Title** and **URL** for the result you wish to add, and press **OK**.
- ◆ The URL has been added to your active results.

NOTE: You can not Add Results to a FilterFind search. This option is only available following a InstantFind or CleanFind Search.

To learn how to set a search result to Monitored/Not Monitored, [go to lesson 12](#).

4.2.5 Lesson 12: Changing Results Settings


WebSeeker uses a variety of Results settings to help you manage your search results. Some of the settings are changed by the program; all of the settings allow you to manually adjust them for your specific purposes. The first time a site appears as the result of a search, **WebSeeker** automatically sets its status to New and displays the New icon with a yellow background next to them in the display window. The New icon also appears for results that have not appeared previously in a search of the current keywords or if the result is considered new for any of the following reasons:

- ◆ The Web page is new.
- ◆ Modifications to the Web page now make it match the search criteria.
- ◆ The search engine has been updated to include any changes.

To manually change results setting:

1. **Make the WSK file you want to work with the active file.**
2. **Select the result you would like to modify**




- ◆ In the Title column of the Display Window, select the results you wish to modify. To select multiple results, hold down the Ctrl key while clicking on each result.
- ◆ Selected result is highlighted, that is **WebSeeker** displays it in inverse video (usually light text on dark background).
- ◆
- ◆

Title	
NEW	 British Comedy
NEW	 Fast Cars/Automotive Information Links
NEW	 Jamey Cates's Bookmarks
NEW	 Julian's Home Page
NEW	 LandShark Racing - Team News
NEW	 Landshark Racing - 333 SP
NEW	 Landshark Racing - 348 Challenge
NEW	 Landshark Racing - 348 GT/Competizione-Le-Mans
NEW	 Landshark Racing - Team Gear

For quick access, you can use the toolbar buttons for **Browsed**, **Rejected** and **Monitored** settings.

3. On the Results menu, select **Set Selected Results to** ▾

4. On the submenu which appears, select the setting you want to assign to the selected result(s):

- ◆ **Monitored/Not Monitored** tells **WebSeeker** whether to watch and report changes to the site on the next search. **WebSeeker** automatically places the monitored icon  over results that have been set to **Monitored**. The next time you run the search you can select to **Renew Monitored**, and only those results you have set to monitored are searched. If there has been a change in the **Monitored** result, the changed icon  is displayed. The changed icon looks like the new icon with a green background.
- ◆ **New/Old** adds or removes the yellow new icon and is useful for filtering purposes.
- ◆ **Changed** marks results that have been modified since the last search. When the content or design of a site is modified, you may want to set that result to **Changed** in order to track it more closely.
- ◆ **Rejected** automatically excludes the results from any new searches. Results that are **Rejected** are excluded from the results list. If the same search is run again, **WebSeeker** excludes any previously rejected results by default. If you want a previously rejected result to be listed in a new search, choose to include **Rejects** on the **View** tab of the Preferences dialog box. You may want to set a result to **Rejected** if you don't want to see it again.
- ◆ **Browsed/Not Browsed** can be used to filter out viewed results on future searches. Set results to **Browsed** when you have already seen them, but you don't want to reject or monitor them. **WebSeeker** automatically places the browsed icon  next to browsed results. Browsed results are also grayed out. This feature can be used to filter out viewed results on future searches. The Browse feature also comes in handy when you have more results than you have time to survey at one time. Use this feature to set results you have already looked over to **Browsed**. When you come back to the search, select to display only **Non-Browsed** results. This way you can go back and finish looking at those results you have not already surveyed.

5. **WebSeeker** changes the results setting.

5 Menu Commands

File

New - Creates a new file and prompts you to save the previous file if you haven't already.

New Search Wizard... - Starts the search wizard.

New Advanced Search... - Starts the advanced search.

Open... - Opens an existing .WSK file

Save As... - Lets you save your search and the results.

Print Setup... - Lets you choose the printer and settings for printing.

Print - Prints the selected results to your printer.

Make a Booklet - If you have ClickBook installed, WebSeeker will print the selected result as a booklet.

WebSeeker Extensions... - Add extensions that you purchase to extend WebSeeker's engines.

Import... - Import all the links on an .htm or .html file.

Export Results

Export URL List - Exports selected URLs to a text file. Depending on the options you have set, it will also write a summary of the text in the URL in "Filter Find" mode.

Export Filter Find List - Exports all the downloaded files to a folder of your choice.

Write Web Page

All Results - Writes a web page with links to pages WebSeeker found.

Selected Results - Writes a web page with links to all the pages you've highlighted.

Delete - Deletes the selected URL or page.

Exit - Exits the program.

Edit

Cut - Removes the selected item and places it on the clipboard

Copy - Copies the selected item to the clipboard.

Paste - Pastes the selected item from the clipboard.

Clear - Deletes the selected item.

Properties - Shows the properties of the selected item and allows the title, URL and status to be changed.

View

Toolbar - Allows the toolbar to be turned on and off.

Text Labels - Allows the text labels on the button bar to be turned on and off.

Status Bar - Allow the status bar at the bottom of the window to be turned on and off.

Search Engines - Opens up the left-hand pane which shows the search engines used and lets you select result by each search engine.

Abstract - Turns the abstracts on and off.

Vertical Layout - Changes the display to show the search engines above instead of to the left of the results.

Sort By

Title - Sorts by Title of the page.

URL - Sorts by the URL of the page.

Type - Sorts by the status of the page such as New, Monitored, etc.

Search

Expand Search... - Add to your search to include more search terms.

Stop - Stops the active search. It may need to complete downloading some pages before stopping.

Start/Renew - Starts the search or does the search again to renew the results.

Renew Monitored - Downloads results that you've marked for monitoring.

Renew Selected Engines - Does the search again for the search engines you've highlighted.

Browse Engine Page - Launches a local version of one search engine's result page.

Schedule... - Lets you set options for automatically running WebSeeker unattended. This is great for monitoring search terms on a regular basis.

Add Custom Search Engine... - Lets you add your own search engines to WebSeeker.

Results

Add Results... - Lets you manually add one page.

Grab Results... - Adds a page by finding an active browser and grabbing the information from the browser.

Turn Refine On/Off - Turn on and off the filter that narrows the search results to those matching the keywords you've entered.

Refine... - Set the keywords to search for. This only works for pages that have been downloaded (FilterFind)

Set Selected Results To

Monitored - Set the pages to be monitored.

New - Set the selected pages to have the "New" attribute. This is helpful for knowing what you've browsed.

Changed - Sets the page to a status of changed.

Rejected - Set the selected pages to rejected will remove them from the visible list, but keep track of them so that you don't see them in the future if the search engine finds the page again.

Browsed - Set the selected pages to browsed so you can keep track of what you've seen.

Downloaded Selected Result(s) - Downloads the pages that you select. Once downloaded you can view them locally (without an internet connection) and you can search using the "Refine..." filter.

Email Results - Emails the results to an e-mail address of your choosing.

Launch Result - Launches the selected result in a browser. If you have downloaded the page, the local version will be used, otherwise the URL will be launched in the browser.

Browse All - Launches a page which links to all of your results.

Statistics... - Gives statistics on how many results you have and of which type.

Tools

Customize... - Lets you customize your toolbar.

Options... - Lets you set the options for the program.

InstantX

Update Now... - Checks for an update to the program.

Undo Last Update... - Reverses the update process in case there is a problem.

Settings... - Let you set the update settings.

Compact Database - Compresses the database. Useful when you've deleted lots of results.

Clear Histories

Clear Keywords List - Clears the history.

Clear All Saved Search Results - Clears the most-recently-used list.

Help

Help Topics - Opens the help file for the program.

Tip of the Day - Lets you browse through the helpful tips.

Blue Squirrel Home - Takes you to our home page.

License Agreement - Lets you read the license agreement.

Register... - Lets you license and register the software.

About WebSeeker... - Tells you the name and version of the program.

6 Advanced Features

6.1 Advanced Searching

If you are a more advanced user, and are familiar with Internet search expressions, you may want to perform an advanced search. Use the [WebSeeker](#) Start New Search dialog box to perform an advanced search.

1. Before you begin:

Launch [WebSeeker](#). Select **File, New Advanced Search** from the [WebSeeker](#) menu bar.

The [WebSeeker](#) Start New Search box appears with the **Keywords** tab displayed.

2. Configure the search

- .. On the Keywords tab, you can enter the keywords for your new search.
- .. Choose the AND or OR Boolean Operators, or search multiple keywords AS A PHRASE. You can also search for a portion, or a SUBSTRING, of a phrase.
- .. Select the type of search desired:

InstantFind - is the fastest type of search. It removes any duplicate URLs or duplicate Titles (as defined in Preferences) from the search results.



CleanFind - is the next fastest type of search. It removes duplicates and any URLs that are unavailable.
FilterFind - is the most robust search. FilterFind is not quite as fast as InstantFind or CleanFind. It removes duplicates, unavailable sites, and downloads search results to your hard drive for Refining.

When you have finished entering keywords and selecting search options, select the **Search Engines** tab to choose which search engines you would like **WebSeeker** to use for the search.

3. Select Search Engines

When you have finished entering your keyword information, you can select the **Search Engines** tab to select specific Search Engines. If no changes are made on the **Search Engines** tab, it defaults to **Select All Engines** that support the specified search type.

4. Launch the search

- Choose  to have **WebSeeker** perform the search immediately.
- Choose  to postpone the search until a later time.

6.2 Time Out Settings

You can set the length of time that **WebSeeker** waits for Reading information, Connecting to a search engine, and Requesting information.

1. After you have completed the information in the Start New Search Dialog box, select "Find Later".
2. From the **Tools** Menu, select **Preferences**. The following dialog box appears.
3. Select the **Search Limits** Tab.
4. Set the **Time Out Settings** to the desired length of time.

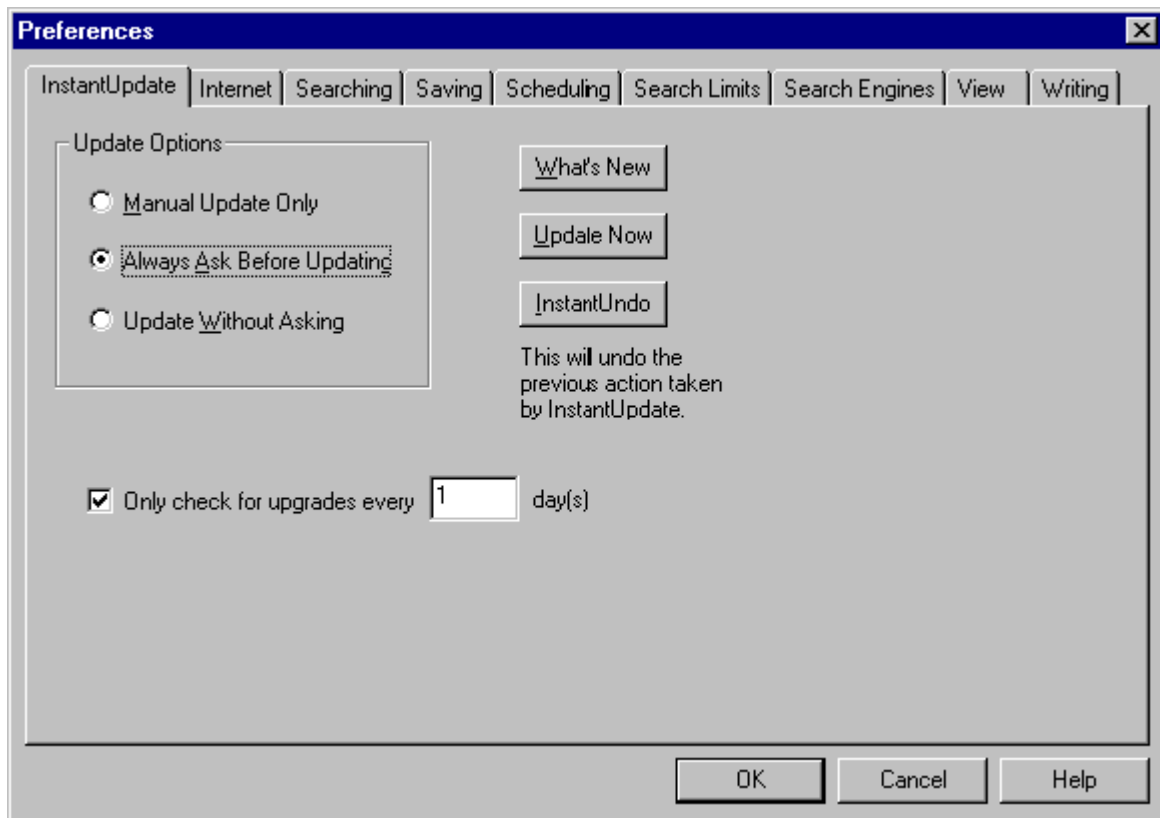
6.3 Setting Options

WebSeeker's Options dialogs allow you to configure many different aspects of the program to suit your personal search preferences. You can set options defining how your search results are displayed; what results are included or excluded; the Web browser you want to use to browse search results; and how **WebSeeker** writes its search results to your hard drive. You can even set up personal options for unattended searches, as well as settings dictated by your network setup. In this chapter, you will learn about each of the options, what they can do, and where to locate each option.

The InstantUpdate Options determine how you obtain your free automatic updates to **WebSeeker**. (Purchasing and registering **WebSeeker** entitles you to free interim upgrades.) The built-in InstantUpdate utility automatically downloads any **WebSeeker** updates directly from the Blue Squirrel Software Web site.

To set preferences:

1. From the **Tools** menu, select **Options**. The **Options** dialog box appears with the **View** tab displayed. Select the **InstantUpdate** tab to switch to the **InstantUpdate** Options page.



2. If you want **WebSeeker** to check for updates only when you manually request it (by choosing **InstantUpdate** from the **Tools** menu), select **Manual Update Only**.

If you want **WebSeeker** to check for updates but ask you before updating, select **Always Ask Before Updating**.

If you want **WebSeeker** to take care of the updating without any intervention on your part, select **Update Without Asking**.

The default settings is **Always Ask Before Updating**.

3. When you have finished configuring your **InstantUpdate** preferences, click **OK** to accept the current configuration and close the **Options** dialog box, or click another tab to configure more preferences.

6.4 Perform an Unattended Search

Creating an unattended search to run during off-peak hours is easy with **WebSeeker**. Follow these simple directions to have **WebSeeker** automatically run a search completely unattended:

1. Click the **Start** button to display the **Start Menu**, and select **Find, On the Internet**. The **WebSeeker Start New Search** dialog box appears.
2. Enter the keywords for the search you want to schedule on the **Keywords** tab. Select the **Search Engines** tab to define the search engines you want to use for the scheduled search.
3. Click **Find Later** to go to the **WebSeeker** main window. From the **Tools** menu select **Preferences**. The **Preferences** dialog box appears with the **View** tab displayed.
4. Select the **Scheduling** tab.
5. Select the **Enable Scheduled Search** check box. The scheduling options are enabled.

6. Enter the **Frequency** and **Start At** information to determine when the scheduled search will run.
7. If you have a direct connection to the Internet (T1, T3 etc.), click the **OK** button to close the **Preferences** dialog, and proceed to step 12.

If you connect to the Internet via modem, select the **Phone** tab.

8. Select the **Use Modem** check box.
9. Select the name of your Dial-up connection in the selection box below the **Phone Book Entry** box.
10. If the user name and password you use for your dial-up connection are the same as those used to log onto your computer, check the **Authenticate using Dial-up Networking Connection entry**.
11. Click the **OK** button to close the Preferences dialog box, and return to the **WebSeeker** main window.
12. When you are satisfied with the configuration of the scheduled search, select **File, Save As**, to save the search with the name of your choice.
13. Minimize **WebSeeker**. The search will run at the scheduled time.

NOTE: **WebSeeker** must be running in either standard, or minimized mode in order for the scheduled search to run.

6.5 Create Search Engine Categories

With **WebSeeker's** new search engine categories, you can create your own categories containing only the search engines you select.

To create a search engine category:

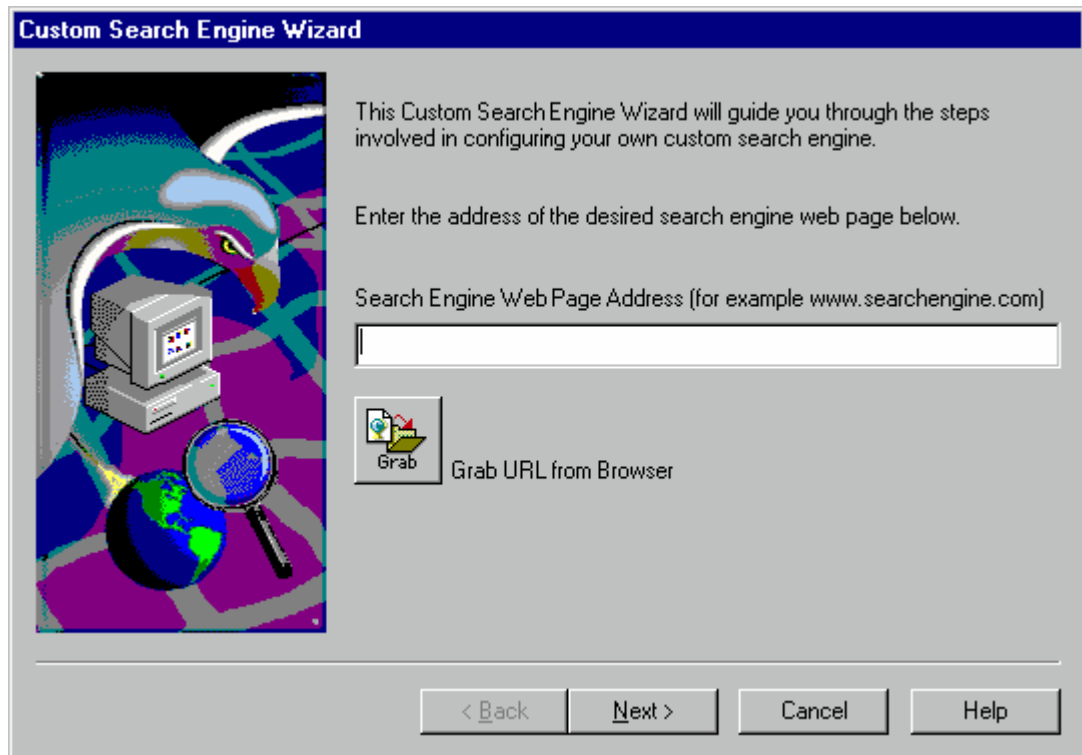
1. Select **Find, On the Internet** from your Start Menu. The **Start New Search** dialog box appears.
2. Click the **Cancel** button to close the **Start New Search** dialog box, and go to the **WebSeeker** window.
3. Select **Tools, Preferences**, from the Menu bar. The **Preferences** dialog box appears. Click the **Search Engines** tab.
4. Select a category.
5. Click the **New** button.
6. In the **New Category** text box, enter a name for the category you are creating, and click the **Add** button. The new category is listed in the Categories pane.
7. From the Search Engines pane, select the search engines you want included in the new category. Hold down the Ctrl key to select multiple engines.
8. Drag and drop the selected engines into the new category folder. The selected engines appear below the category in a tree list.
9. When you are finished configuring your categories, select the OK button to close the **Preferences** dialog.
10. The next time you run a search, you can select your new category from the drop down menu on the Search Engines tab of the **Start New Search** dialog box. **WebSeeker** automatically selects only the engines you specified for that category.


6.6 Add New Search Engines

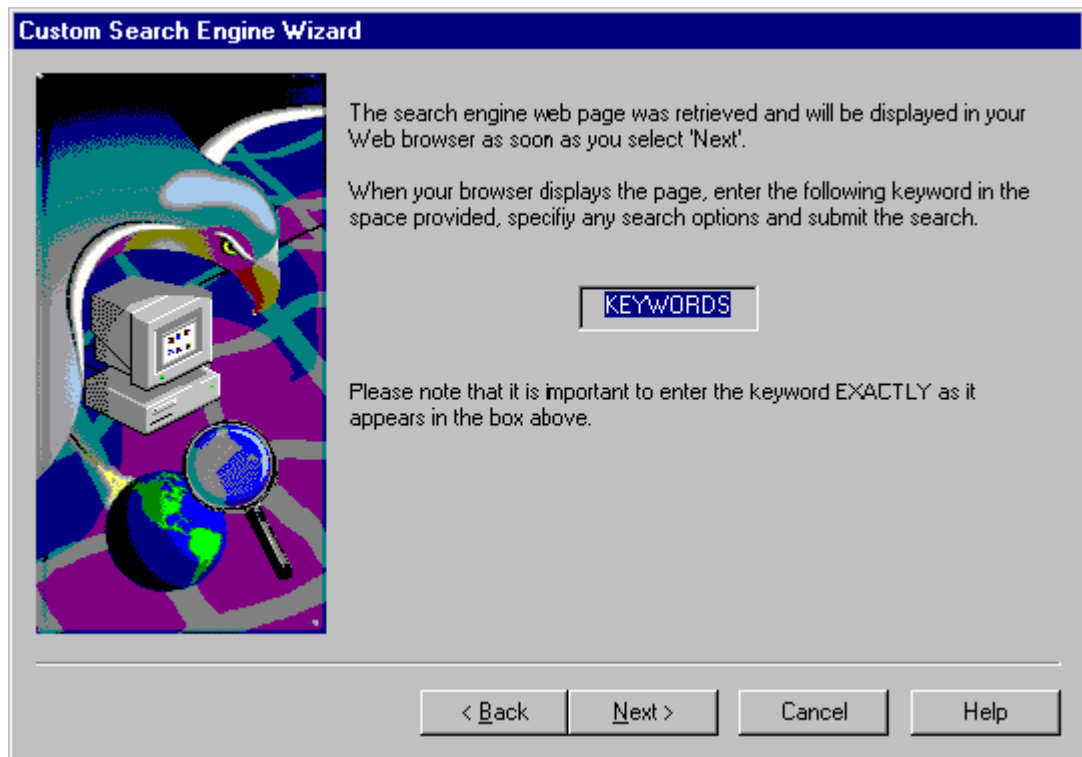
Now you can easily add new search engines to **WebSeeker** any time you want.

To add new search engines:

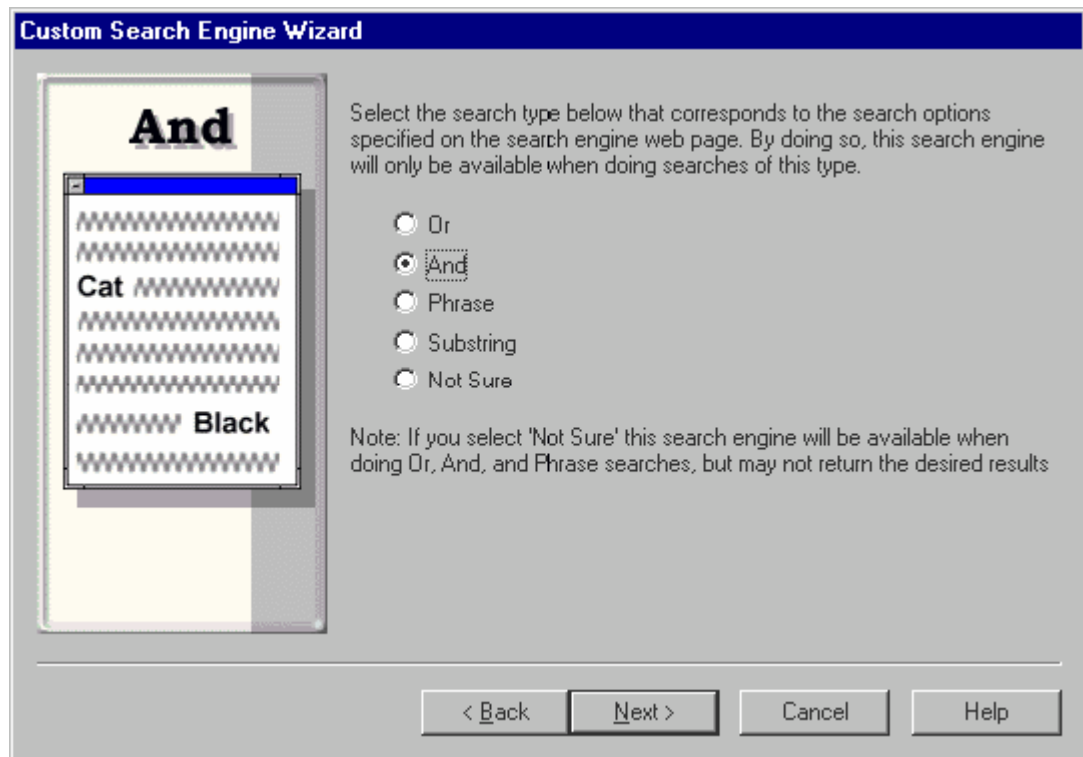
1. From the **WebSeeker** window, select **Search, Add Custom Search Engine**, from the Menu bar.
Or
Select the Search Engines pane on the **Search Engine Preferences** tab, and click the **New** button. The **Custom Search Engine Wizard** appears.



2. Enter the URL for the search engine you want to add, or click the **Grab URL**  icon to have **WebSeeker** get the active URL from your web browser.
3. Click **Next**, to proceed to the next dialog.



4. Carefully read the instructions and click **Next**.
5. The **Custom Search Engine Wizard** launches your browser. When the search engine page appears, enter "KEYWORDS" in all caps in the keyword text box, or you can press Ctrl-C in the Custom Search Wizard to copy "KEYWORDS", and then press Ctrl-V in the browser to paste it. Set any available options you want, and launch the search according to the specific directions of the search engine page.
6. A web page appears displaying the words "Search Engine Capture Complete". Return to [WebSeeker](#) (if necessary). The next **Custom Search Engine Wizard** dialog is displayed.



7. Select the type of search the engine performs (**AND, OR, Phrase, Substring, or Not Sure**) and click **Next**. The final **Custom Search Engine Wizard** dialog appears.

NOTE: if the search engine performs different types of searches, you will need to re-capture it for each search type.

8. Enter a name for the new search engine, and select the category you want the engine included in.
9. Click the **Finish** button. The search engine has been added to **WebSeeker**.

6.7 Search Engine Properties

Use the Search Engine Properties dialog box to verify, or modify the properties of selected custom search engines. The Search Engine Properties dialog box is provided for power users to make the necessary modifications to custom engines. You CANNOT modify a standard search engine, only the custom engines that you add are modifiable. The Custom Search Wizard does much of the required configuration to the search engines it captures, however, additional configuration may be needed for custom search engines to work correctly. Periodic modifications may be necessary as the search engine changes.

The Search Engine Properties dialog box is provided for power users. If you are unfamiliar with search engine properties, do not change them. Modifications may disable the search engine.

7 Customer Support

Blue Squirrel offers free online technical support to customers that purchase WebSeeker. Customers needing to speak with a Blue Squirrel representative may purchase a Technical Support contract for \$19.95/month by calling 800-403-0925. Technical Support contract owners can speak with a Blue Squirrel representative Monday through Friday from 9:00 am to 5:00 pm Mountain Standard time.

If you cannot find the information you need in any of the preceding sources, contact us at our Web site.

Please refer to WebSeeker's support and FAQs for answers to frequently asked questions.
<http://www.bluesquirrel.com/support/>

8 Upgrading

Purchasing **WebSeeker** entitles you to any minor upgrades (version .x). **InstantUpdate** automatically upgrades to the newest version of **WebSeeker**.

Major upgrades are available for purchase from **Blue Squirrel**.

Choose *Tools->InstantX->Update Now* to check for updates and update to the latest version.

Drop by our Web site to find out about new products and upgrades:

<http://www.bluesquirrel.com/products/webseeker/>

We suggest you select the **Notify Me of New Products and Upgrades** check box when you register.

9 Uninstalling

Choose *Start->Settings->Control Panel->Add or Remove Programs*.

Choose *Blue Squirrel WebSeeker* and choose the *Change/Remove* button.