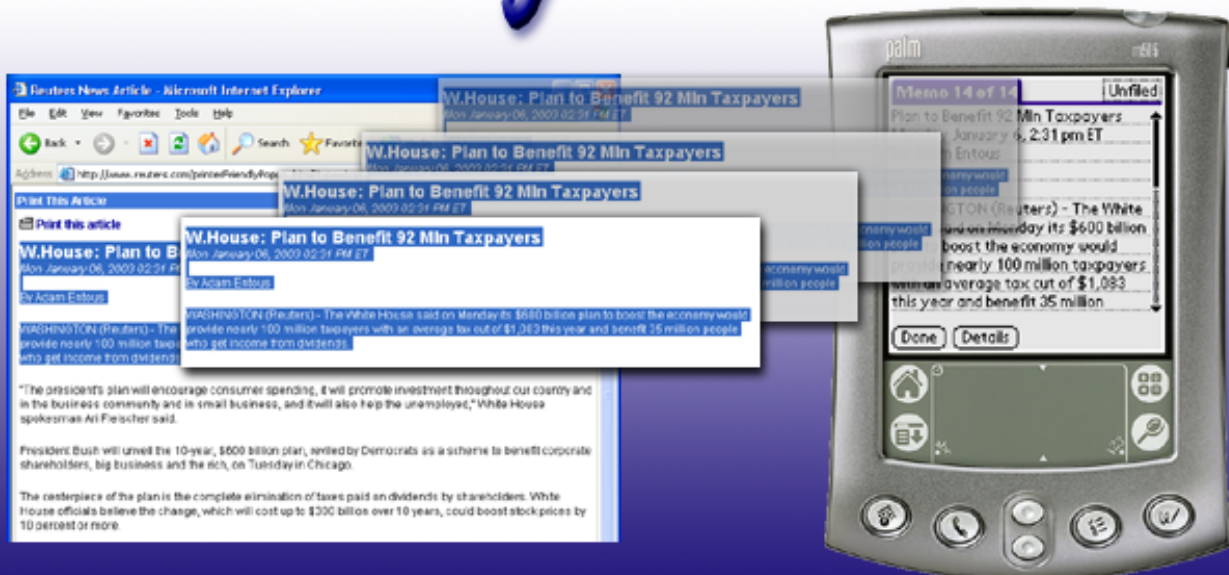


Snapature™



©2001-2005 Blue Squirrel, All Rights Reserved

Snapature for Palm OS

For Windows 95/98/ME/2000/XP/2003 and Palm OS

User's Guide

Snapture Help File

© 2005 Blue Squirrel

All rights reserved. No parts of this work may be reproduced in any form or by any means - graphic, electronic, or mechanical, including photocopying, recording, taping, or information storage and retrieval systems - without the written permission of the publisher.

Products that are referred to in this document may be either trademarks and/or registered trademarks of the respective owners. The publisher and the author make no claim to these trademarks.

While every precaution has been taken in the preparation of this document, the publisher and the author assume no responsibility for errors or omissions, or for damages resulting from the use of information contained in this document or from the use of programs and source code that may accompany it. In no event shall the publisher and the author be liable for any loss of profit or any other commercial damage caused or alleged to have been caused directly or indirectly by this document.

Printed: March 2005

Information in this document is subject to change without notice and does not represent a commitment on the part of Blue Squirrel. The software described herein, including all associated documentation and data, is the exclusive property of Blue Squirrel or its suppliers and is furnished only under a license agreement defining the terms and conditions governing its use by licensee. It is against the law to copy the software except as specifically allowed in the license agreement. No part of this document may be reproduced or transmitted in any form or by any means, including without limitation graphic, electronic, photocopy, facsimile, taping or mechanical reproduction of any kind without the prior written approval of Blue Squirrel.

Use of this product is subject to the terms of the accompanying License Agreement as stated in the back of this book.

U.S. Government Restricted Rights Legend

The Software and documentation are provided with RESTRICTED RIGHTS. Use, duplication, or disclosure by the Government is subject to restrictions as set forth in subparagraph (c) (1) of the Rights in Technical Data and Computer Software clause at DFARS 52.277-7013 or in subparagraph (c) (1) (ii) and (20) of Commercial Computer Software-Restricted Rights at 48 CFR 52.227-19, as applicable. Contractor/manufacturer is Blue Squirrel Software, 686 E. 8400 South, Sandy, UT 84070.

Special thanks to:

All the people that contributed to the development of Blue Squirrel's PopUp Stopper, including the developers, copywriters, web site developers, technical support, customer service, manual editors, alpha testers, and the beta testers.

Table of Contents

Foreword	0
Part I Introduction	2
Part II Installation	2
Part III Basics	2
Part IV Options...	3
1 General	3
2 Header/Footer	4
3 File List	5
4 Hot Keys	6
5 Category	7
Part V Advanced	7
Part VI Conduit Interface	8
Part VII Troubleshooting	8
Part VIII Support	9
Part IX License	9
Index	12

1 Introduction

Quick and Easy Text Capture for your Palm OS PDA

Snapture™ captures text from any source with a single click, or keystroke. Transfers to your Palm OS PDA when you sync. Use it to capture e-mails, web pages, driving directions, receipts, program codes, hints, tips and more.

Works with all Palm OS PDAs.

2 Installation

The installation program is called SnaptureSetup.exe. You must run the setup program to install Snapture™ to your hard disk. Here's a summary of what the setup program does:

- Copies the Snapture™ files to your hard disk.
- Configures a HotSync Conduit so that text snaps will be Synchronized when you HotSync.
- Configures Snapture to run at StartUp
- At the end of the installation process Snapture™ presents you with the option to view the README.TXT. We recommend looking this document over because it contains more information about Snapture™.

When you first start the Snapture™ program the InstantX registration dialog box will appear. To fully register your copy of Snapture™ please fill out the form and enter your VIP Key, and then send it electronically to Blue Squirrel. If you don't register Snapture™ the InstantX dialog box will pop up each time you run the program, and it will run as an evaluation program. Once you have registered, you'll see your License Key code in the About box.

3 Basics

Create Snaps

A Snap is a quickly captured text from any source. It will be sent to your Palm OS PDA when you sync.


Once you have Snapture running, you can create Snaps by highlighting text in any program and then click on the Snapture icon in the tray. You can also use a [Hot Key](#) to create a Snap. By default, the HotKey is F11 to create a new Snap, and F12 to append to the last captured Snap. You can use the mouse to create a snap. Just ALT-left-click to create a Snap. The default [Hot Keys](#) and [Mouse](#) settings can be changed by going to Options...

Synchronize Snaps

To Synchronize the Snaps to your Palm OS PDA, just sync. The Snaps will be removed from the [File List](#), and you will be ready to capture more text.

With just one click, or one keystroke, capture text to take with you.

Ways to capture text:

1. Highlight text and hit F11 (or your defined key).
2. Highlight text and hit the Snapture icon in the tray
3. Highlight text and ALT-left-click the mouse (or your defined setting).
4. Highlight text and copy to the clipboard, then right-click on the Snapture icon and choose "Paste from the Clipboard"
5. Append text to the last captured text with ALT-F11 (or your defined key).
6. In IE, hit the  icon to capture the selected text.

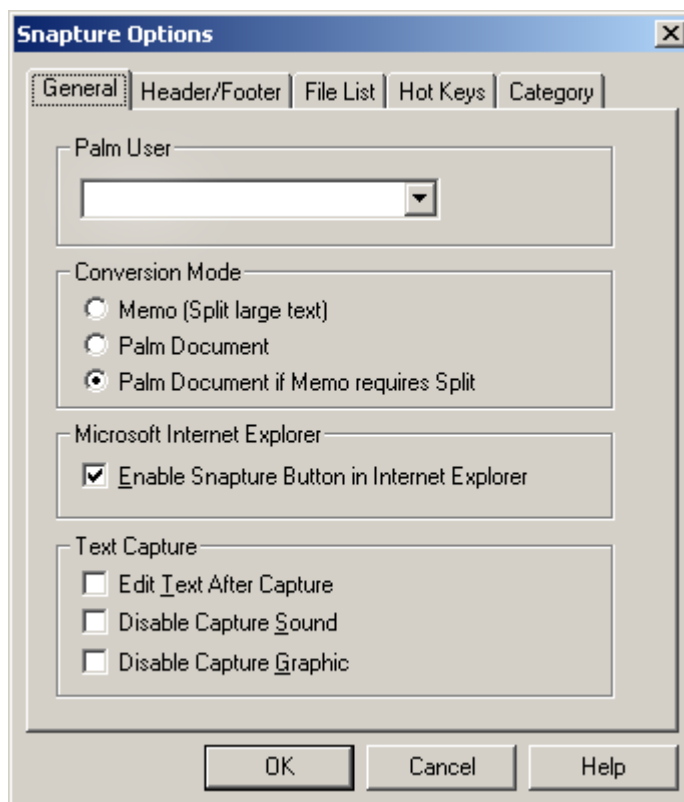
4 Options...

To get to options, right-click on the Snapture icon and choose Options...

Option Tabs

- [General](#)
- [Header/Footer](#)
- [File List](#)
- [Hot Keys](#)
- [Category](#)

4.1 General



Palm User - Choose the Palm User that will be using Snapture. Often times, there will only be one

user you can select. If you are not sure which user to select, then on your Palm OS device, choose the HotSync application. The Palm User (HotSync name) will be in the upper right-hand corner.

Conversion Mode - Choose the type of text conversion.

Memo - (Split large text) This option will put the Snaps in Memo. If the Memo is too large, it will be split into multiple Memos as necessary.

Palm Document - (for standard PalmDoc viewers) Choosing this option will cause Snapture to put the text into a standard Palm OS doc format. There are many freely available doc viewers for any Palm OS device.

Palm Document if Memo requires Split - Only puts large documents as Docs, otherwise it goes to the Memo.

If you don't have a doc text reader, we suggest you visit [Palm Gear](#) or [Handango](#) to find a suitable doc reader. There are many good free readers available and some good text editors also.

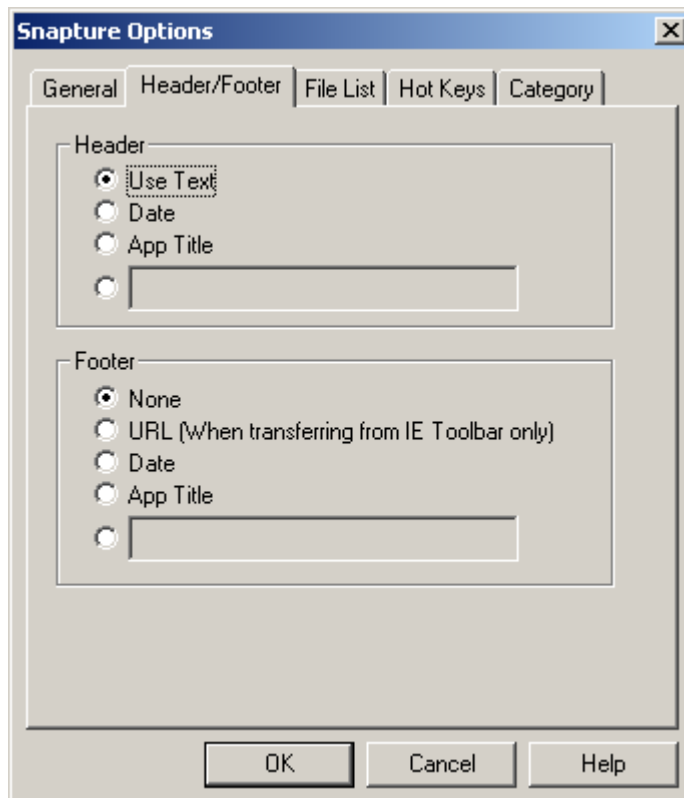
Microsoft Internet Explorer

- **Enable Snapture button in Internet Explorer** - Select this option to add a button to Internet Explorer to capture selected text.

Text Capture

- **Edit Text After Capture** - Gives you a notepad after Snapturing text. The first line will be the memo title or doc name.
- **Disable Capture Sound** - Suppresses the Snap sound when capturing text. Replace the CAPTURE.WAV file to change the sound.
- **Disable Capture Graphic** - Suppresses the Snap logo when capturing text.

4.2 Header/Footer



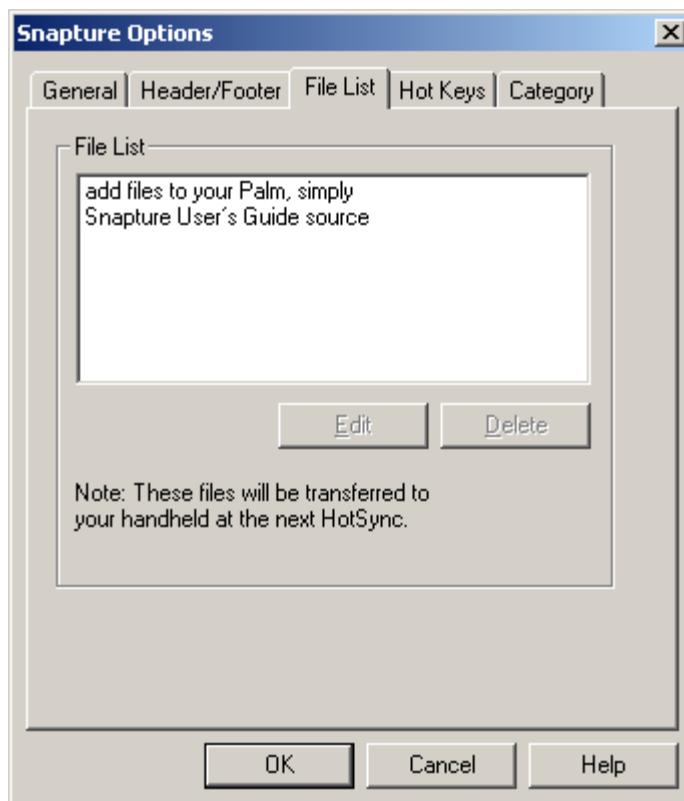
Header

- **Use Text** - Uses the first line of text for the memo or doc name.
- **Date** - Uses the date for the memo or doc name.
- **App Title** - Uses the title of the application you captured the text from as the memo or doc name.
- **Custom** - Uses a custom setting. See [Advanced](#) for more information on variables you can use.

Footer

- **None** - Do not append any additional text to the bottom of the capture text.
- **URL (When transferring from IE Toolbar only)** - Add the URL to the bottom of the Snap.
- **Date** - Adds the capture date to the bottom of the Snap.
- **App Title** - Adds the title of the application to the bottom of the Snap.
- **Custom** - Add some custom text to the bottom. See [Advanced](#) for more information for variables you can use.

4.3 File List

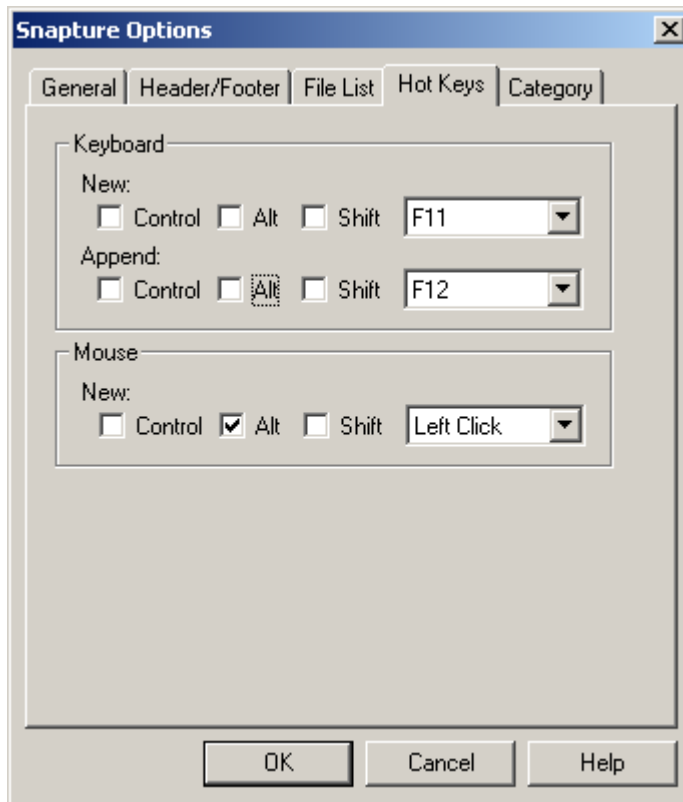


This shows you the list of files (Snaps) that will be sent to your Palm OS PDA the next time you sync. You may edit the Snaps before you sync. You may also select Snaps and delete them.

Double-click or select and hit **[E]dit** to edit a Snap in your text editor.

Select and hit the delete key, or hit **[D]elete** to delete a Snap before you sync your Palm OS PDA.

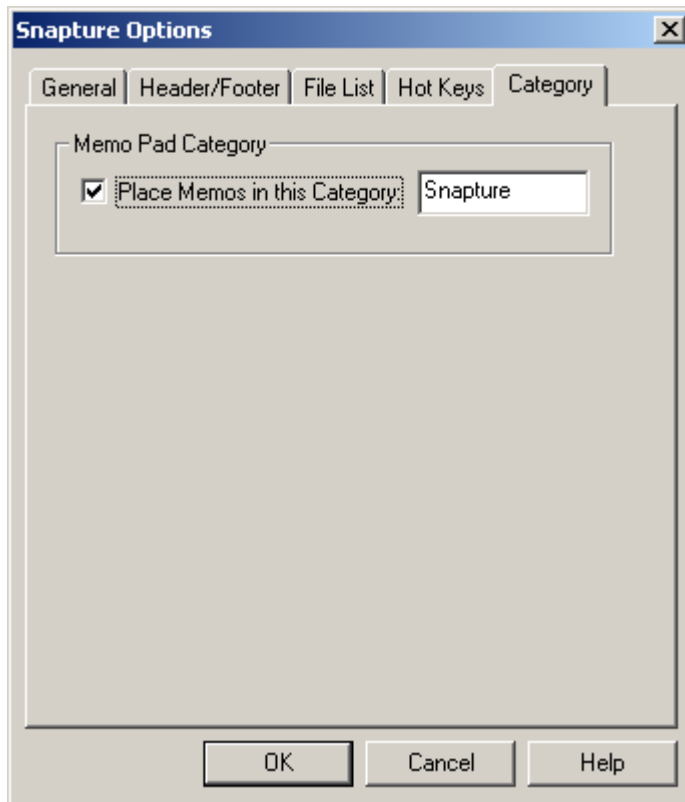
4.4 Hot Keys



Choose the Hot Keys you would like to use to Snap the text.

Append will append the selected text to the previous Snap, and using a keyboard Hot Key is the only way to do it. It is very convenient for creating a large text document or memo from multiple sources.

4.5 Category



If you'd like to put all your Snaps in a single category, use this option. The category will automatically be created if you still have available categories.

5 Advanced

InstantUpdate

Snapture™ has the ability to update itself over the Internet. Right-click on the Snapture icon in the tray and choose Update->Update Now!

InstantX Settings

You can have Snapture check for updates every time it runs, once a day, or once a week. To change the settings, right-click on the icon in the tray and choose Update > Settings > InstantX Update. Then you can specify how frequently to check for updates. We recommend once a day or once every seven days.

Advanced Headers/Footers

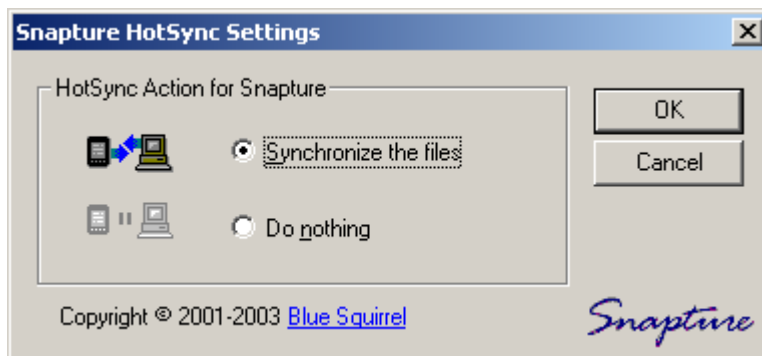
The Header is pre-pended to your text. Because the memo and doc title uses the first line of your text as the title, the Header is how your text will show up on your Palm OS PDA. You can specify a custom Header and Footer. There are some pre-set headers and footers for Date and Application Title. To configure Headers and Footers double click on the Snapture icon in your tray and select the Header/Footer tab. Enter your desired criteria, and press OK to save your changes. There are radio buttons to choose from or you can specify your own using custom macros:

- %d - Date
- %t - Time
- %u - URL (Please note, this macro only works when you capture information using Snapture icon in Internet Explorer.)
- %i - Application Title

For example: If the next hour is going to be spent researching Vitamins, you may want to set the *Header* to custom and set it to "Vitamins - %t", and set the *Footer* to "%d - %u" Each of your memos will display "Vitamins – 9:34:05 AM" and "Vitamins – 9:36:19 AM" at the top. The bottom will list the date and URL of the Web site where you found the information: "12/5/2002 – <http://www.vitamins.com/feelgood.html>". If you alphabetize your memos or docs, they will all be grouped together and in chronological order.

6 Conduit Interface

The Snapture™ Conduit does the actual synchronization when you HotSync. The HotSync application runs the conduit.



To launch this dialog box, right-click on the HotSync icon, choose "Custom..." and then choose Snapture and then hit "Change..."

Synchronize the files – This is the default setting. The files will be synchronized between the PC directory and the handheld's card.

Do nothing – This setting keeps the conduit from running. You may want to use this option if you want to quickly disable the synchronization of the Snaps for one HotSync cycle.

7 Troubleshooting

Problem: *The text does not capture to the File List when I hit the hot key.*

Solution: Some applications do not work properly when sent a copy command. You should right-click and choose "Copy" and then right-click on the Snapture icon and choose "Paste from Clipboard"

Problem: *The text shows up in the File List when I right-click and copy, then right-click on Snapture and "Paste from Clipboard", but doesn't work with the hot key.*

Solution: Some applications do not work properly when sent a copy command. You should right-click and choose "Copy" and then right-click on the Snapture icon and choose "Paste from Clipboard"

Problem: *The text is captured ok, and shows up in the File List, but when I HotSync, it never leaves the File List and nothing shows up on my device.*

Solution: This means the conduit is not working. First check to see if it is installed by right-clicking on HotSync and choose "Custom...", and make sure Snapture is listed. If it isn't then, you need to run "Snapture.exe /u", and then run "Snapture.exe /i" to install the conduit. If that doesn't work then download and install the latest version of the Palm Desktop and try it again. Also, make sure it says "Synchronize the files" next to *Snapture in HotSync->Custom....* The other problem may be that you need an application with the "calc" ID to trigger the conduit. This is automatically on most Palm OS devices, but you may need to install Snapture.prc. It comes with the install and is in the Program folder. Double-click on it, or use the Install Tool to put it on your device.

Problem: *The text is captured ok, and shows up in the File List, and it disappears from the File List when I HotSync, but I can't find the text on my device.*

Solution: The most likely cause is that you are installing in a location where you can't see it. Check to make sure you are installing it to Memo. If you are installing as a doc, then make sure you have a standard doc reader. Some doc readers require you to import doc files before they can be seen. Also, check to make sure you are viewing "All" memos by choosing the "All" category in the upper right-hand corner on your Palm OS device.

8 Support

Visit Blue Squirrel's Support:

<http://www.bluesquirrel.com/support/>

Customer Service

<http://www.bluesquirrel.com/>

801-352-1551

Hours are: Monday through Friday, 8:00 a.m. to 5:00 p.m. Mountain Standard Time.

9 License

THE BLUE SQUIRREL END USER LICENSE AGREEMENT REDISTRIBUTION NOT PERMITTED

GRANT. Subject to payment of applicable license fees, Blue Squirrel grants you a non-exclusive license to use the Software and accompanying documentation ("Documentation") in the manner described below under "Scope of Grant."

SCOPE OF GRANT

You may:

- use the Software on any single computer;
- use the Software on a network, provided that each person accessing the Software through the network must have a copy licensed to that person;
- use the Software on a second computer so long as only one copy is used at a time;
- copy the Software for archival purposes, provided any copy must contain all of the original Software's proprietary notices; or
- if you have purchased licenses for a 10 Pack or a 50 Pack, make up to 10 or 50 copies, respectively, of the Software (but not the Documentation), provided any copy must contain all of the original Software's proprietary notices. The number of copies is the total number of copies that may be made for all platforms. Additional copies of Documentation may be purchased.

You may not:

- permit other individuals to use the Software except under the terms listed above;
- permit concurrent use of the Software;

- modify, translate, reverse engineer, decompile, disassemble (except to the extent applicable laws specifically prohibit such restriction), or create derivative works based on the Software;
- copy the Software other than as specified above;
- rent, lease, grant a security interest in, or otherwise transfer rights to the Software; or
- remove any proprietary notices or labels on the Software.

LIMITED WARRANTY.

Blue Squirrel warrants that for a period of ninety (90) days from the date of acquisition, the Software, if operated as directed, will substantially achieve the functionality described in the Documentation. Blue Squirrel does not warrant, however, that your use of the Software will be uninterrupted or that the operation of the Software will be error-free or secure. In addition, you must determine that the Software sufficiently meets your requirements. Blue Squirrel also warrants that the media containing the Software, if provided by Blue Squirrel, is free from defects in material and workmanship and will so remain for ninety (90) days from the date you acquired the Software. Blue Squirrel's sole liability for any breach of this warranty shall be, in Blue Squirrel's sole discretion; (i) to replace your defective media; or (ii) to advise you how to achieve substantially the same functionality with the Software as described in the Documentation through a procedure different from that set forth in the Documentation; or (iii) if the above remedies are impracticable, to refund the license fee paid for the Software. Repaired, corrected, or replaced Software and Documentation shall be covered by this limited warranty for the period remaining under the warranty that covered the original Software, or if longer, for thirty (30) days after the date (a) of shipment to you of the repaired or replaced Software, or (b) Blue Squirrel advised you how to operate the Software so as to achieve the functionality described in the Documentation. Only if you inform Blue Squirrel of your problem with the Software during the applicable warranty period and provide evidence of the date you purchased a license to the Software will Blue Squirrel be obligated to honor this warranty. Blue Squirrel will use reasonable commercial efforts to repair, replace, advise or, refund pursuant to the foregoing warranty within 30 days of being so notified. IF THE SOFTWARE IS INCLUDED AS PART OF A LARGER BUNDLE, SOME OF THESE REMEDIES MAY NOT BE AVAILABLE TO YOU.

THIS IS A LIMITED WARRANTY AND IT IS THE ONLY WARRANTY MADE BY BLUE SQUIRREL. BLUE SQUIRREL MAKES NO OTHER EXPRESS WARRANTY AND NO WARRANTY OF NONINFRINGEMENT OF THIRD PARTIES' RIGHTS. THE DURATION OF IMPLIED WARRANTIES, INCLUDING WITHOUT LIMITATION, WARRANTIES OF MERCHANTABILITY AND OF FITNESS FOR A PARTICULAR PURPOSE, IS LIMITED TO THE ABOVE LIMITED WARRANTY PERIOD; SOME JURISDICTIONS DO NOT ALLOW LIMITATIONS ON HOW LONG AN IMPLIED WARRANTY LASTS, SO LIMITATIONS MAY NOT APPLY TO YOU. NO BLUE SQUIRREL DEALER, AGENT, OR EMPLOYEE IS AUTHORIZED TO MAKE ANY MODIFICATIONS, EXTENSIONS, OR ADDITIONS TO THIS WARRANTY. If any modifications are made to the Software by you during the warranty period; if the media is subjected to accident, abuse, or improper use; or if you violate the terms of this Agreement, then this warranty shall immediately be terminated. This warranty shall not apply if the Software is used on or in conjunction with hardware or software other than the unmodified version of hardware and software with which the software was designed to be used as described in the Documentation.

THIS WARRANTY GIVES YOU SPECIFIC LEGAL RIGHTS, AND YOU MAY HAVE OTHER LEGAL RIGHTS THAT VARY BY JURISDICTION.

TITLE. Title, ownership rights, and intellectual property rights in the Software shall remain in Blue Squirrel and/or its suppliers. The Software is protected by the copyright laws and treaties. Title and related rights in the content accessed through the Software is the property of the applicable content owner and may be protected by applicable law. This License gives you no rights to such content.

TERMINATION. The license will terminate automatically if you fail to comply with the limitations described herein. On termination, you must destroy all copies of the Software and Documentation.

LIMITATION OF LIABILITY. UNDER NO CIRCUMSTANCES AND UNDER NO LEGAL THEORY, TORT, CONTRACT, OR OTHERWISE SHALL BLUE SQUIRREL OR ITS SUPPLIERS OR RESELLERS BE LIABLE TO YOU OR ANY OTHER PERSON FOR ANY INDIRECT, SPECIAL,

INCIDENTAL, OR CONSEQUENTIAL DAMAGES OF ANY CHARACTER INCLUDING, WITHOUT LIMITATION, DAMAGES FOR LOSS OF GOODWILL, WORK STOPPAGE, COMPUTER FAILURE OR MALFUNCTION, OR ANY AND ALL OTHER COMMERCIAL DAMAGES OR LOSSES. IN NO EVENT WILL BLUE SQUIRREL BE LIABLE FOR ANY DAMAGES IN EXCESS OF THE AMOUNT BLUE SQUIRREL RECEIVED FROM YOU FOR A LICENSE TO THE SOFTWARE, EVEN IF BLUE SQUIRREL SHALL HAVE BEEN INFORMED OF THE POSSIBILITY OF SUCH DAMAGES, OR FOR ANY CLAIM BY ANY OTHER PARTY. THIS LIMITATION OF LIABILITY SHALL NOT APPLY TO LIABILITY FOR DEATH OR PERSONAL INJURY TO THE EXTENT APPLICABLE LAW PROHIBITS SUCH LIMITATION. FURTHERMORE, SOME JURISDICTIONS DO NOT ALLOW THE EXCLUSION OR LIMITATION OF INCIDENTAL OR CONSEQUENTIAL DAMAGES, SO THIS LIMITATION AND EXCLUSION MAY NOT APPLY TO YOU.

MISCELLANEOUS. If the copy of the Software you received was accompanied by a printed or other form of "hard copy" End User License Agreement whose terms vary from this Agreement, then the hard copy End User License Agreement governs your use of the Software. This Agreement represents the complete agreement concerning this license and may be amended only by a writing executed by both parties. THE ACCEPTANCE OF ANY PURCHASE ORDER PLACED BY YOU IS EXPRESSLY MADE CONDITIONAL ON YOUR ASSENT TO THE TERMS SET FORTH HEREIN, AND NOT THOSE IN YOUR PURCHASE ORDER. If any provision of this Agreement is held to be unenforceable, such provision shall be reformed only to the extent necessary to make it enforceable. This Agreement shall be governed by Texas law (except for conflict of law provisions). The application of the United Nations Convention of Contracts for the International Sale of Goods is expressly excluded.

U.S. GOVERNMENT RESTRICTED RIGHTS. Use, duplication or disclosure by the Government is subject to restrictions set forth in subparagraphs (a) through (d) of the Commercial Computer-Restricted Rights clause at FAR 52.227-19 when applicable, or in subparagraph (c)(1)(ii) of the Rights in Technical Data and Computer Software clause at DFARS 252.227-7013, or at 252.211-7015, and in similar clauses in the NASA FAR Supplement. Contractor/manufacturer is Blue Squirrel, 686 E. 8400 South Sandy, UT 84070.

Index

- A -

Advanced 7

- B -

Basics 2

- C -

Category 7
Conduit 8
Conduit Interface 8
Custom 7
Customer Service 9

- D -

Do Nothing 8
Doc 3

- F -

File List 5
Footer 4

- G -

General 3

- H -

Header 4
Hot Keys 6

- I -

Installation 2
Introduction 2

- L -

License Agreement 9

- M -

Memo 3

- O -

Options 3

- P -

Palm Document 3
Palm User 3

- S -

Snap 5
Snaps 2, 5
Split Memo 3
Split Text 3
Support 9
Synchronize Files 8
Synchronizing 2

- U -

Update 7